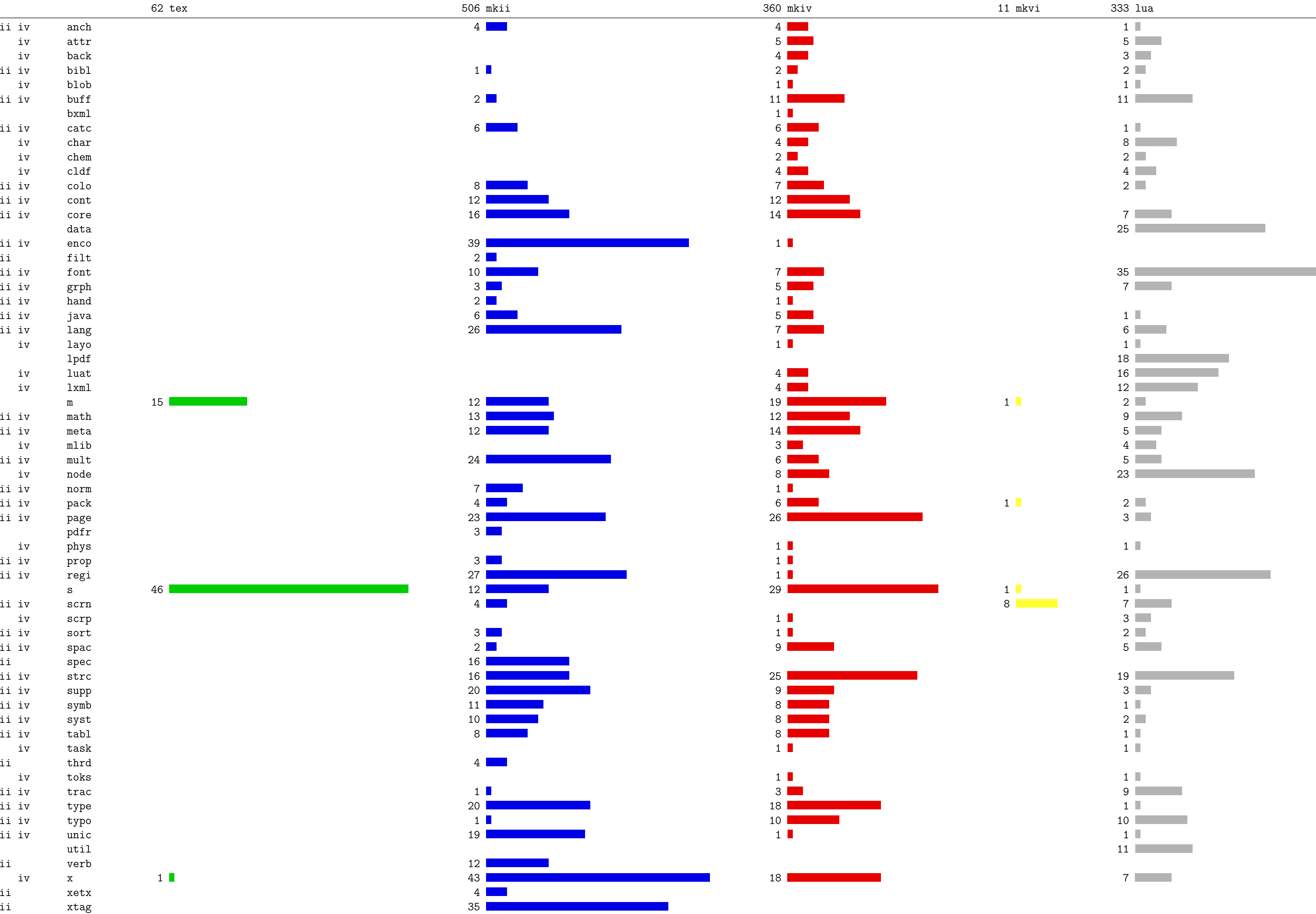
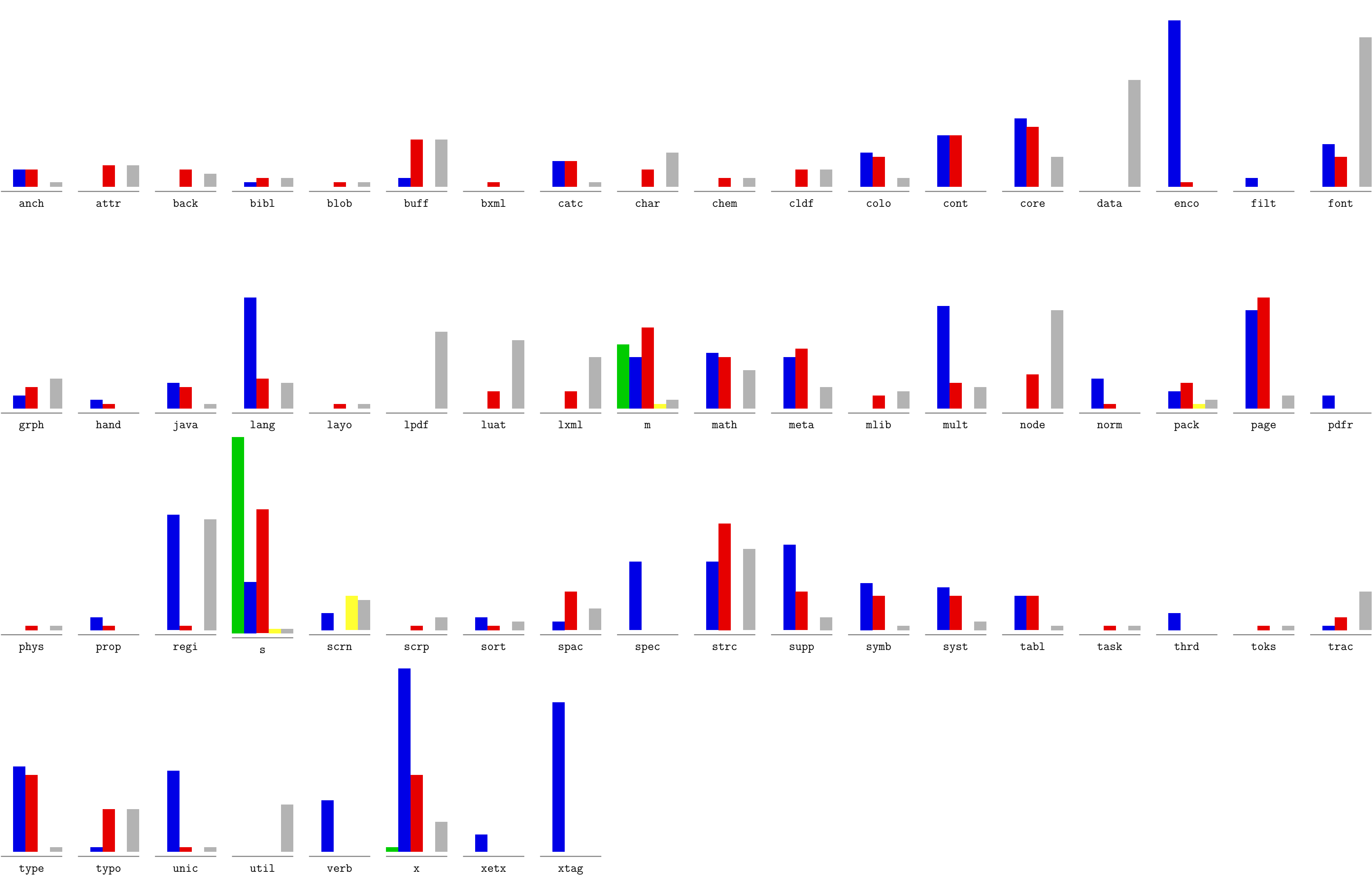


June 19, 2011 - The number of files used in ConTeXt (base modules and styles).



		217749 tex	4206952 mkii 4864339 +	2355587 mkiv	89176 mkvi	2014758 lua 4738765 +
ii	iv	anch	51232	43703		6420
	iv	attr		7448		19326
	iv	back		16635		41394
ii	iv	bibl	29628	47535		18487
	iv	blob		342		2159
ii	iv	buff	27006	22783		46393
		bxml		14228		
ii	iv	catc	20214	22507		672
	iv	char		2936		- 93745
	iv	chem		14562		14352
	iv	cldf		946		17776
ii	iv	colo	107362	85334		18420
ii	iv	cont	19100	15181		
ii	iv	core	121531	96671		29000
		data				92791
ii	iv	enco	239352	6538		
ii		filt	2612			
ii	iv	font	100181	84849		407665
ii	iv	grph	54876	36674		33639
ii	iv	hand	21944	1194		
ii	iv	java	24509	16529		4876
ii	iv	lang	139935	41152		49312
	iv	layo		366		950
		lpdf				158745
	iv	luat		8002		42167
	iv	lxml		11954		95399
		m	61258	95024	4361	4238
ii	iv	math	106653	63189		88531
ii	iv	meta	71515	44912		28778
	iv	mlib		2275		41771
ii	iv	mult	- 34085	36313		- 53534
	iv	node		12397		109090
ii	iv	norm	24250	28		
ii	iv	pack	81076	87721	1494	2697
ii	iv	page	278005	283599		13802
		pdfr	32610			
	iv	phys		3424		7414
ii	iv	prop	9042	1185		
ii	iv	regi	149606	382		52725
		s	154601	80279	4359	999
ii	iv	scrn	84434		78962	11036
	iv	scrp		847		26959
ii	iv	sort	20298	139		33183
ii	iv	spac	85334	83200		37525
ii		spec	133355			
ii	iv	strc	346404	320852		129415
ii	iv	supp	171035	68004		10176
ii	iv	symb	82839	31370		910
ii	iv	syst	125617	114378		3395
ii	iv	tabl	115623	132436		967
	iv	task		119		6219
ii		thrd	74501			
	iv	toks		1238		5471
ii	iv	trac	13446	14538		37610
ii	iv	type	352075	162464		729
ii	iv	typo	147	18369		46547
ii	iv	unic	56356	464		347
		util				28697
ii		verb	72521			
	iv	x	1890	98372		38305
ii		xetx	126321			
ii		xtag	219991			

June 19, 2011 - The relative number of files used in ConTeXt (tex, mkii, mkiv, mkvi, lua).



June 19, 2011 - The relative size of files used in ConTeXt (tex, mkii, mkiv, mkvi, lua).

